

Bi-Directional, Single Tone Industrial Air Horn

*EFFECTIVE OUTDOOR COVERAGE OF UP TO 3 KILOMETERS

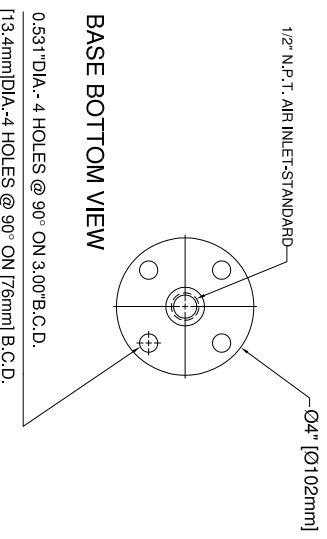
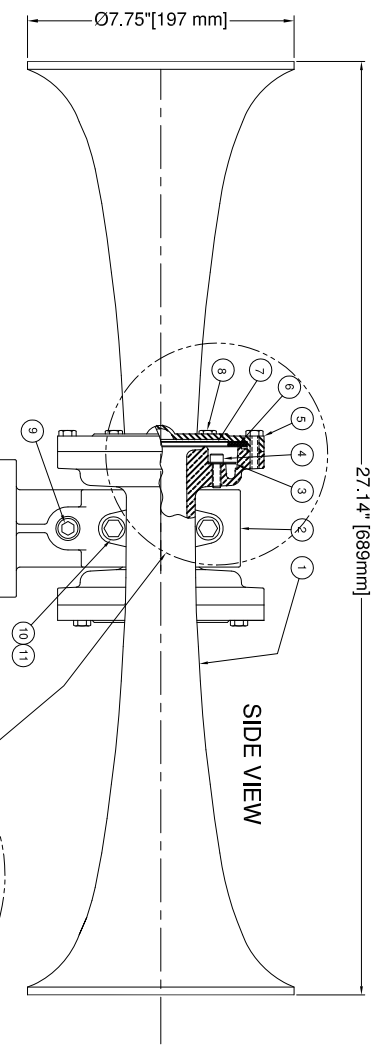
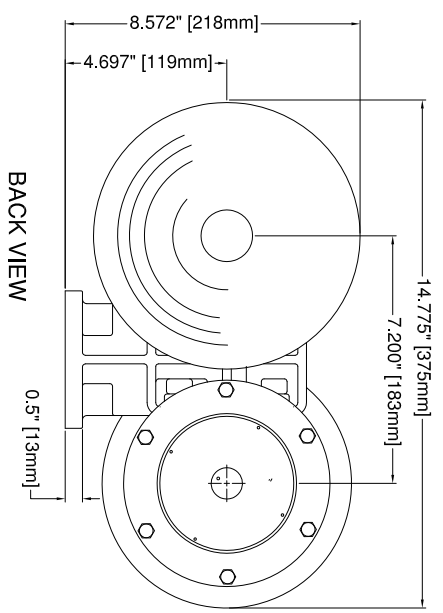


- Single tone, 311 Hz fundamental frequency, engineered to produce full harmonic contents up to 12 octave in order to enhance warning effectiveness
- Energy efficient with hermetically sealed stainless steel diaphragm assembly
- Will operate on a wide range of pressure without tuning and field adjustments for years of trouble-free service
- Construction: High strength aluminum casting and stainless steel fasteners

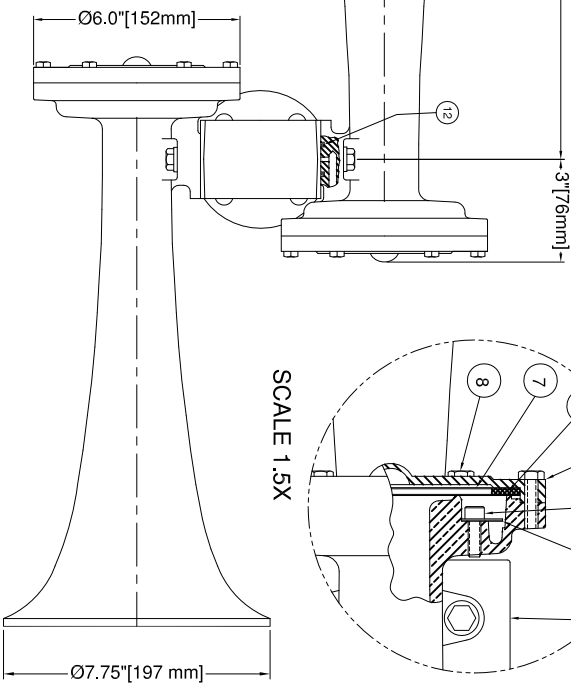
* Signal will produce a sound pressure level of approximately 70 dB @ 3 km in calm, cool conditions without topographical interference. Signal strength at distance can vary dramatically depending on environmental and geographical conditions. Please consult factory for more detailed information.

| | |
|--|--|
| Operating Medium: Control: | Air, nitrogen, CO ₂ , 1/2" NPT inlet Manual, solenoid or combination valve |
| SPL (Loudness) on Total: Consumption: | 140 ± 1 dBA @ 1 meter 22 L/sec [45 SCFM] @ 7 bar [100 PSIG] |
| Audibility: Fundamental Frequency: Tone (Musical Note): | 3 km (bi-directional) on still air 311 Hz ± 10 Hz D ₄ sharp |
| Operating Pressure: Operating Temperature: | 5-10 bar [72-145 PSI] -40°C to 85°C [-40°F to 185°F] |
| Finish: Degree of Protection: | Primed and painted red IP 54 |
| Basic Dimension: Net Weight: | 689x375x218mm [27X15X9"] 6.4 kg [14 lbs] |

| REV. | BY | DATE | DESCRIPTION | APP'D. |
|------|----|------|-------------|--------|
| | | | | |



FUNDAMENTAL FREQUENCY: 311 HZ



ALL DIMENSIONS ARE FOR REFERENCE ONLY, U.S.

* RECOMMENDED SPARE PARTS

| REF PART | DESCRIPTION | MATERIAL | SPECIFICATION | QTY |
|----------|----------------------------|-------------------|---------------|-----|
| 1 | 30101 BELL BODY, 311Hz | CAST ALUMINUM | ASTM-B26-65 | 2 |
| 2 | 30124 TWO BELL BASE | CAST ALUMINUM | UNS A95352 | 1 |
| 3 | 30143 DIFFUSER | STAINLESS STEEL | UNS S30400 | 2 |
| 4 | 30144 SOCKET HD. CAP SCREW | STAINLESS STEEL | ASTM F594 | 6 |
| 5 | 30109 DIAPHRAGM CAP | DIE CAST ALUMINUM | ASTM-B26-65 | 2 |
| 6 | 30112 CUSHION RING | SILICONE RUBBER | ASTM D2000 | 2 |
| 7 | 30111 DIAPHRAGM DISC | STAINLESS STEEL | UNS S30100 | 4 |
| 8 | 30110 HEX HEAD CAP SCREW | STAINLESS STEEL | ASTM F593C | 12 |
| 9 | 20914 PIPE PLUG 3/8\"/> | | | |
| 10 | 30119 HEX HEAD CAP SCREW | STAINLESS STEEL | ASTM F593C | 4 |
| 11 | 30122 LOCKWASHER | STAINLESS STEEL | ASA B27.1 | 4 |
| 12 | 30211 O RING | BUNA N | ML STD 417 | 2 |

CONFIDENTIAL

INFORMATION CONTAINED HEREIN IS CONFIDENTIAL. IT IS THE PROPERTY OF KAHLBERG INDUSTRIES INC.. IT IS TO BE USED SOLELY FOR THE PURPOSE PROVIDED, AND IT IS NOT TO BE DISCLOSED TO OTHERS WITHOUT THE PRIOR WRITTEN CONSENT OF KAHLBERG INDUSTRIES INCORPORATED.



KAHLBERG INDUSTRIES INC. TWO RIVERS, WISCONSIN 54241

OUTLINE DIMENSIONS / PARTS LIST
MODEL K1R1 AIR HORN
SINGLE TONE REVERSED HORNS

CAGE: 75214

Copyright Kahlberg Ind. Inc. 2010

| DR. | DATE | CKD. | SCALE | DRWG. NO. | REV. |
|-----|----------|------|--------|-----------|------|
| ZJN | 03/19/13 | EMK | N.T.S. | 30240 | |