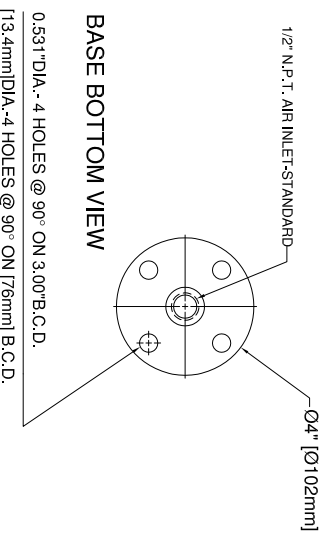
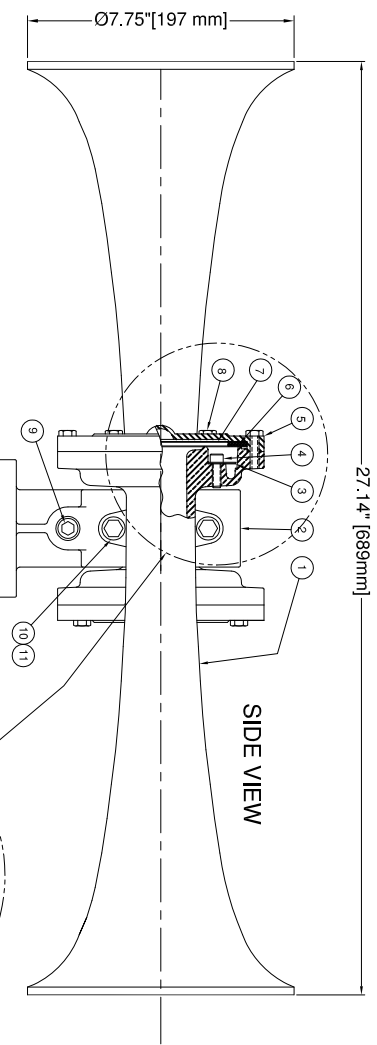
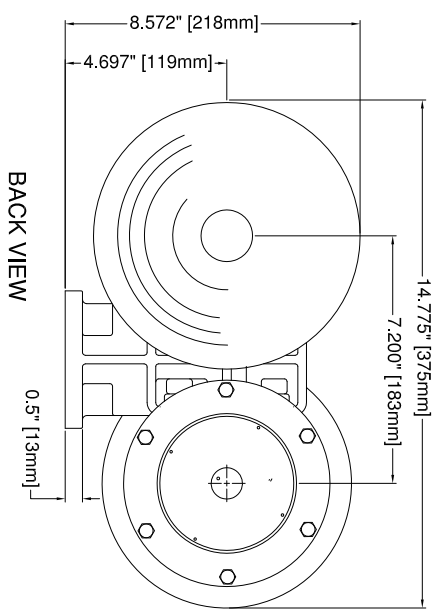
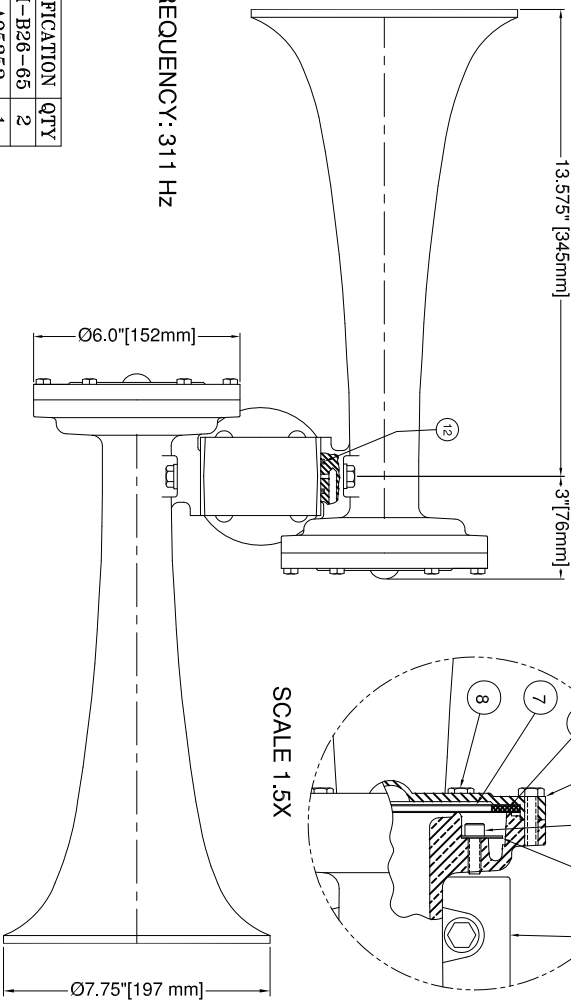


REV.	BY	DATE	DESCRIPTION	APP'D.



FUNDAMENTAL FREQUENCY: 311 HZ



ALL DIMENSIONS ARE FOR REFERENCE ONLY, U.S.

* RECOMMENDED SPARE PARTS

REF PART	DESCRIPTION	MATERIAL	SPECIFICATION	QTY
1	30101 BELL BODY, 311Hz	CAST ALUMINUM	ASTM-B26-65	2
2	30124 TWO BELL BASE	CAST ALUMINUM	UNS A95352	1
3	30143 DIAPHRAGM	STAINLESS STEEL	UNS S30400	2
4	30144 SOCKET HD. CAP SCREW	STAINLESS STEEL	ASTM F594	6
5	30109 DIAPHRAGM CAP	DIE CAST ALUMINUM	ASTM-B26-65	2
6	30112 CUSHION RING	SILICONE RUBBER	ASTM D2000	2
7	30111 DIAPHRAGM DISC	STAINLESS STEEL	UNS S30100	4
8	30110 HEX HEAD CAP SCREW	STAINLESS STEEL	ASTM F593C	12
9	20914 PIPE PLUG 3/8" NPT	ALLOY STEEL	ASA B18.8	2
10	30119 HEX HEAD CAP SCREW	STAINLESS STEEL	ASTM F593C	4
11	30122 LOCKWASHER	STAINLESS STEEL	ASA B27.1	4
12	30211 O RING	BUNA N	ML STD 417	2

CONFIDENTIAL

INFORMATION CONTAINED HEREIN IS CONFIDENTIAL. IT IS THE PROPERTY OF KAHLBERG INDUSTRIES INC.. IT IS TO BE USED SOLELY FOR THE PURPOSE PROVIDED, AND IT IS NOT TO BE DISCLOSED TO OTHERS WITHOUT THE PRIOR WRITTEN CONSENT OF KAHLBERG INDUSTRIES INCORPORATED.



KAHLBERG INDUSTRIES INC. TWO RIVERS, WISCONSIN 54241

OUTLINE DIMENSIONS / PARTS LIST
MODEL K1R1 AIR HORN
SINGLE TONE REVERSED HORNS

CAGE: 75214

Copyright Kahlberg Ind. Inc. 2010

DR.	DATE	CKD.	SCALE	DRWG. NO.	REV.
ZJN	03/19/13	EMK	N.T.S.	30240	